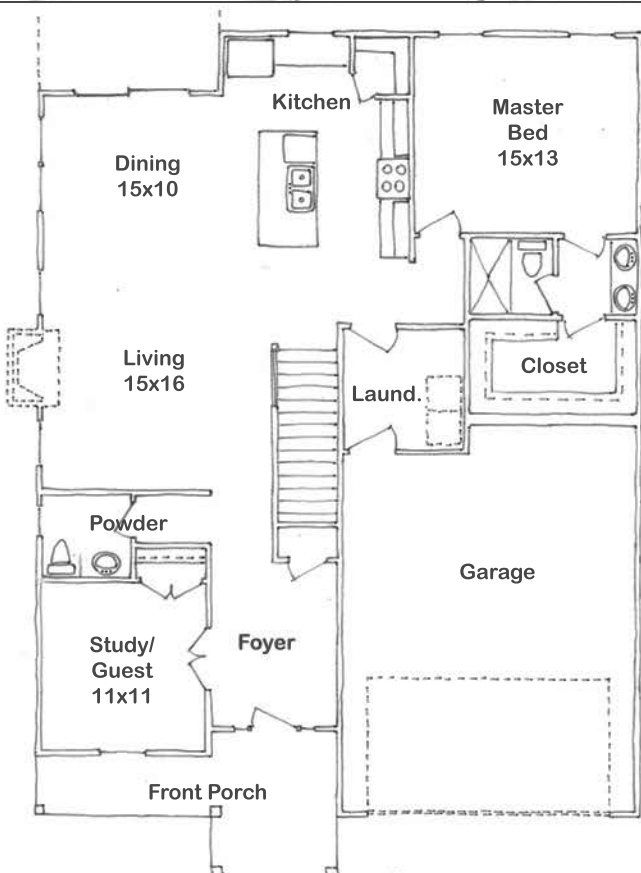




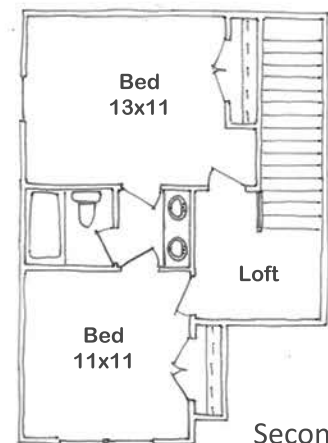
The Congaree

1900 sf / 4 beds / 2.5 baths

- * Open living floorplan
- * Covered front porch
- * Open dining
- * Large kitchen
- * Powder room downstairs
- * Master suite downstairs
- * Study/Guest downstairs
- * Loft area upstairs
- * 2 car garage
- * Optional cover back porch
- * Optional fireplace



First Floor



Second Floor